

Risen and iTEP

Your future starts here!

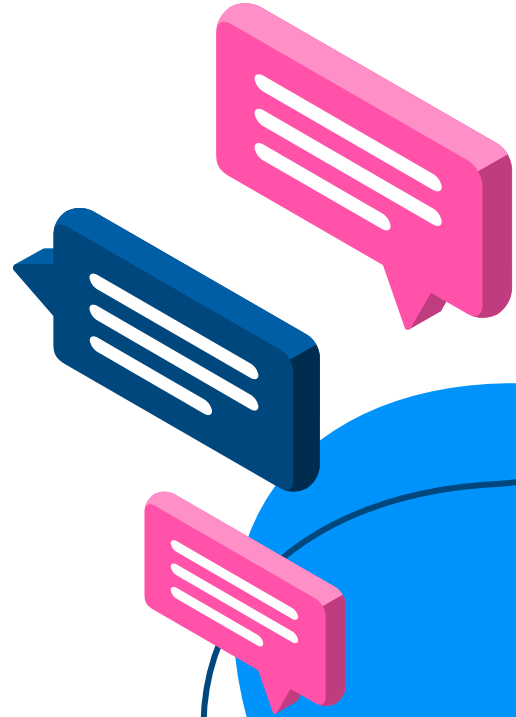




Table of Contents

1

Who is Risen?

RICEC: Risen
International Culture
Exchange Center

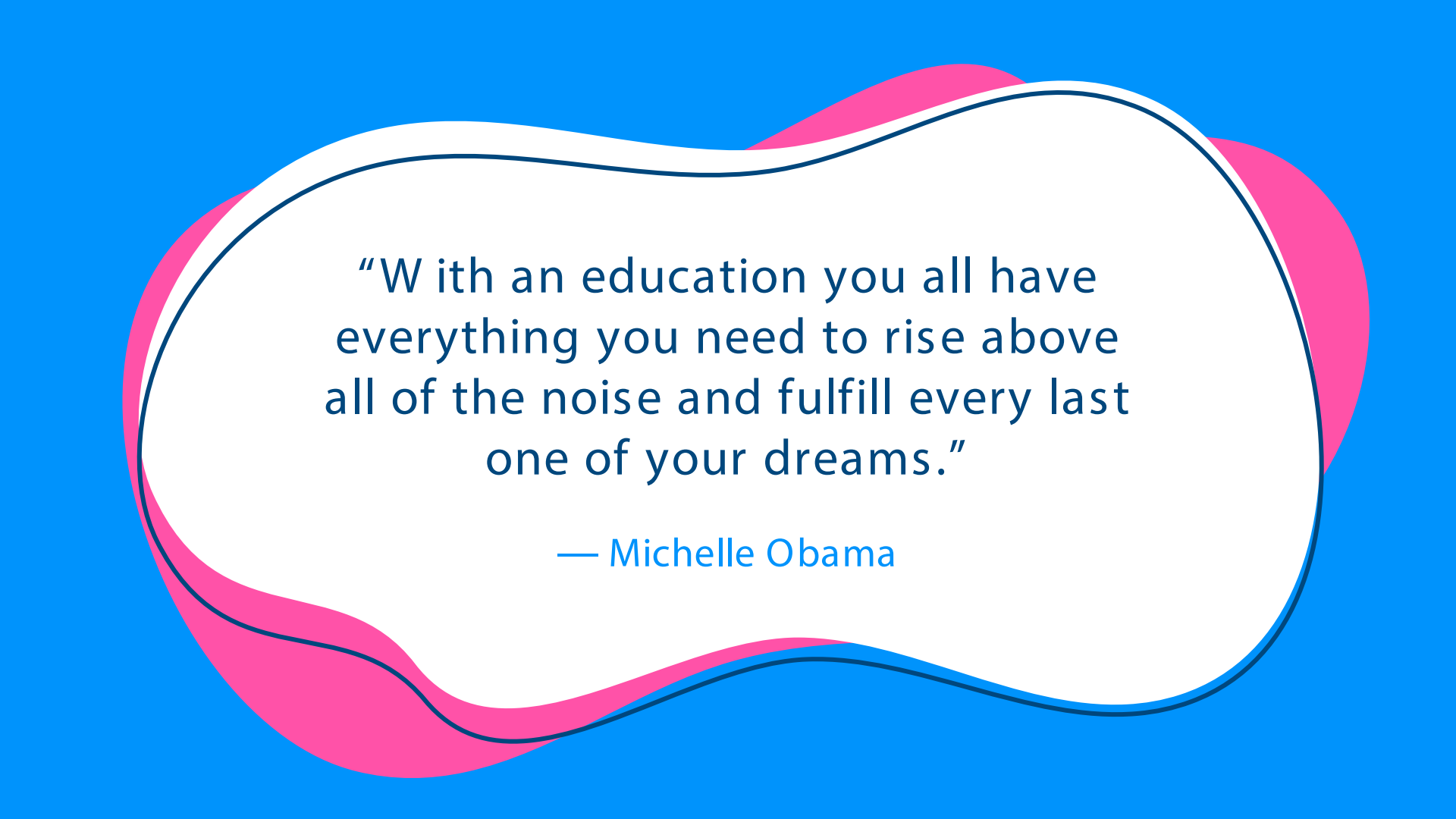
2

What is iTEP?

iTEP: International
Test of English
Proficiency

3

Opportunities
after iTEP



“With an education you all have
everything you need to rise above
all of the noise and fulfill every last
one of your dreams.”

— Michelle Obama

1

Who is Risen?

RICEC – Risen International Culture
Exchange Center



Risen International Culture Exchange Center



Who are we?

Non-profit organization for international cultural exchanges and cooperation



When were we founded?

Founded in 2003 with branches in Europe, Asia, and Americas

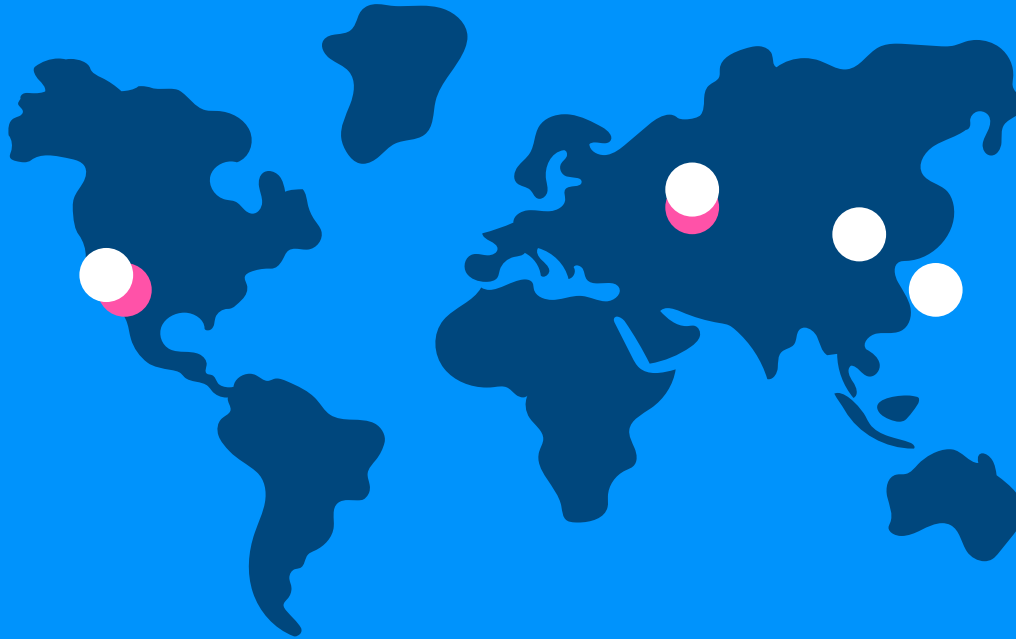


What do we do?

Promote educational and collaborative exchange between countries



Our Offices and Partners



● Offices
LA, Kyiv, China, and
Taiwan

● Partners
23 CSUs, 3 UCs

What Sets Us Apart

Embrace new paths

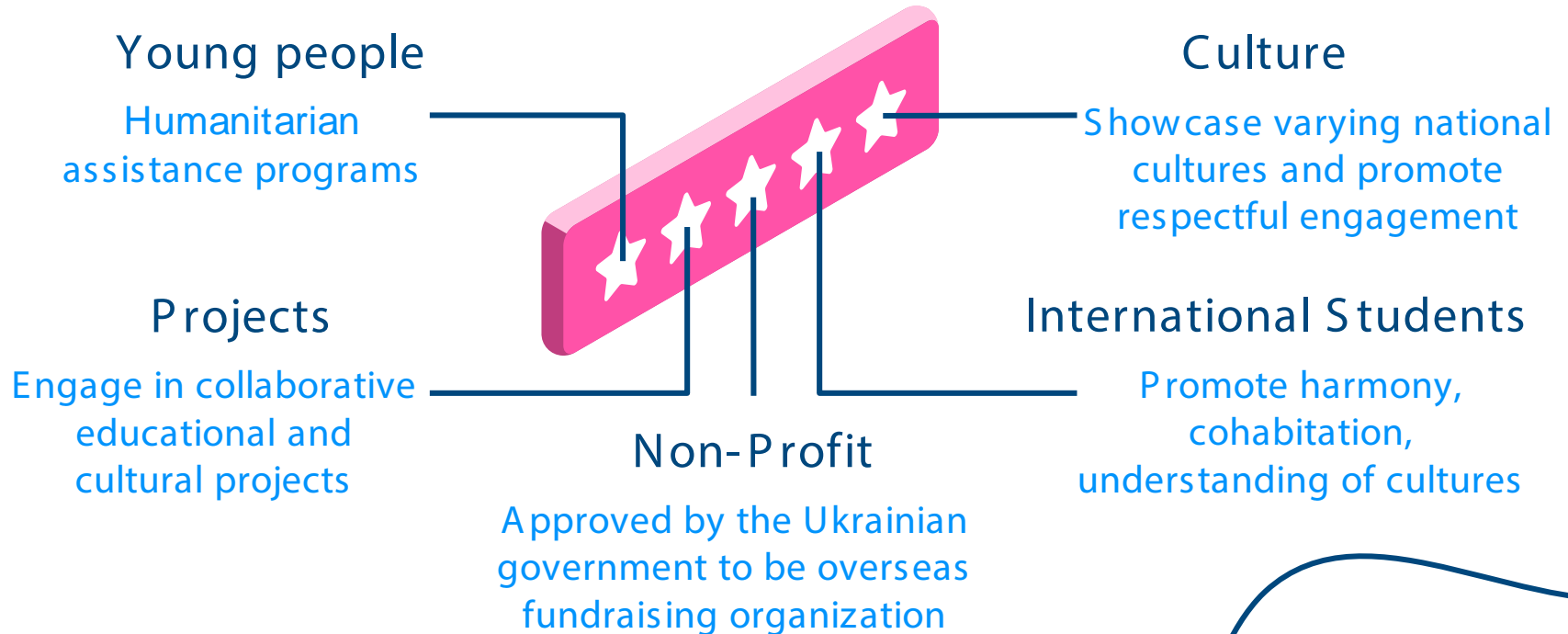


Communication
and cooperation

Innovative approaches

Create international
partnerships

Our Focus





Over 1,000

Overseas international students



International study in Ukraine

With the help of RICEC, the first self-funded Taiwanese international students came to Kyiv!

2

What is iTEP?

International Test of English Proficiency





iTEP International

- A world-class international education corporation
- iTEP makes products for test-takers, educators, and administrators alike.
- Wide range of test products

iTEP Tests

iTEP Academic

Colleges, universities
and intensive
English Programs

iTEP SLATE

Secondary Level
Assessment Test of
English – High
schools and middle
schools.

iTEP Business

Corporations and
government



iTEP Tests

iTEP Placement

Intensive English
programs and post-
secondary institutions

iTEP Intern

Internships and
apprenticeships

iTEP Conversation

Practical training programs
and corporations

iTEP Au Pair

The Au Pair industry

iTEP Hospitality

Hotels, cruise lines, resorts,
and restaurants

iTEP Certificate Tests

All test-takers at a variety
of proficiency levels

iTEP Academic



- Efficient, secure, accurate, and affordable
- Used by colleges, universities, intensive English programs (IEPs), and other organizations to measure English proficiency
- The test can be scheduled on-demand at test centers all over the world or on your premises
- Results are available instantly or in a few days
- The test lasts no more than 90 minutes
- Costs \$129 USD (+ \$10 processing fee)

iTEP Academic-Plus—TOEFL® IBT Comparison Chart

	iTEP Academic-Plus	TOEFL® IBT
Total Exam Time	<ul style="list-style-type: none"> 90 minutes (all five sections) 	<ul style="list-style-type: none"> 240 minutes (all four sections)
Skills Assessed	<ul style="list-style-type: none"> Five sections/skills directly evaluated: grammar, listening, reading, writing, speaking 	<ul style="list-style-type: none"> Four sections/skills directly evaluated: listening, reading, writing, and speaking Grammar indirectly tested
Target Age Group	<ul style="list-style-type: none"> Graduating high school to university level students 	<ul style="list-style-type: none"> University level students
Difficulty Level Tested	<ul style="list-style-type: none"> Tests at different difficulty levels, from beginner to mastery 	<ul style="list-style-type: none"> Tests at one level of difficulty, from upper-intermediate to advanced
Purpose	<ul style="list-style-type: none"> Evaluate students' English ability for college and university admission purposes Place students in English language programs Perform pre- and post-course assessment Qualify candidates for scholarships and exchange program acceptance Evaluate language proficiency for placement 	<ul style="list-style-type: none"> Evaluate students' English ability for college and university admission purposes Place students in English language programs Evaluate language proficiency for placement and hiring (business and organizations)
Test Delivery Format	<ul style="list-style-type: none"> Internet 	<ul style="list-style-type: none"> Internet
Security	<ul style="list-style-type: none"> Tests can only be administered at secured Certified iTEP Test Centers Certified proctors on-site; ensure that photo IDs match each test-taker Item Bank feature ensures that no test is replicated and that test items are secure by streaming the content live during the exam FotoSure™ software photographs the test-taker throughout the exam 	<ul style="list-style-type: none"> Tests can only be administered at secured ETS Certified Test Centers Certified administrators on-site; ensure that photo IDs match each test-taker
Grading	<ul style="list-style-type: none"> Multiple-choice sections (grammar, listening, and reading) evaluated by iTEP software Writing and speaking sections evaluated by native English speaking ESL-trained professionals 	<ul style="list-style-type: none"> ETS graders evaluate the tests. Scores normally come from ETS, but some employers and schools provide the results
Scoring	<ul style="list-style-type: none"> Overall score ranges from 0 to 6, with .1 level increments, as well as individual section scores, based on standardized rubric Scored linguistic sub-skill sections give a more detailed picture of skill level 	<ul style="list-style-type: none"> Overall score ranges from 0 to 120, as well as individual section scores, based on standardized rubric
Scheduling	<ul style="list-style-type: none"> On-demand scheduling within three days of contacting a Certified iTEP Test Center 	<ul style="list-style-type: none"> Test dates are scheduled in advance by ETS
Results Delivery Time	<ul style="list-style-type: none"> Results returned in 24 hours 	<ul style="list-style-type: none"> Results returned within eight days
Additional iTEP Benefits	<ul style="list-style-type: none"> iTEP partners can get immediate online access to all test results, as well as access to the submitted writing and speaking portions iTEP available in customized and modularized versions iTEP partners can utilize their premises to become iTEP test centers and administer the exam on-site 	

iTEP Academic-Plus — IELTS™ Comparison Chart

	iTEP Academic-Plus	IELTS™ (Academic)
Total Exam Time	<ul style="list-style-type: none"> 90 minutes (all five sections) 	<ul style="list-style-type: none"> 174 minutes (all four sections)
Skills Assessed	<ul style="list-style-type: none"> Five sections/skills directly evaluated: grammar, listening, reading, writing, speaking 	<ul style="list-style-type: none"> Four sections/skills directly evaluated: listening, reading, writing, speaking (face-to-face interview; conducted on different day)
Target Age Group	<ul style="list-style-type: none"> University level students 	<ul style="list-style-type: none"> University level students
Difficulty Level Tested	<ul style="list-style-type: none"> Tests at different difficulty levels, from beginner to mastery 	<ul style="list-style-type: none"> Tests at one level of difficulty, from upper-intermediate to advanced
Purpose	<ul style="list-style-type: none"> Evaluate students' English ability for college and university admission purposes Place students in English language programs Perform pre- and post-course assessment Qualify candidates for scholarships and exchange program acceptance Evaluate language proficiency for placement 	<ul style="list-style-type: none"> Evaluate students' English ability for college and university admission purposes Place students in English language programs Perform pre- and post-course assessment Qualify candidates for scholarships and exchange program acceptance Evaluate language proficiency for placement
Test Delivery Format	<ul style="list-style-type: none"> Internet 	<ul style="list-style-type: none"> Paper, plus face-to-face interview
Security	<ul style="list-style-type: none"> Tests can only be administered at secured Certified iTEP Test Centers Certified proctors on-site; ensure that photo IDs match each test-taker Item bank feature ensures that no test is replicated and that test items are secure by streaming the content live during the exam FotoSure™ software photographs the test taker throughout the exam 	<ul style="list-style-type: none"> Tests can only be administered at secured IELTS Certified Test Centers Certified administrators on-site; ensure that photo IDs match each test-taker
Grading	<ul style="list-style-type: none"> Multiple-choice sections (grammar, listening, and reading) evaluated by iTEP software Writing and speaking sections evaluated by iTEP graders, native English speaking ESL-trained professionals 	<ul style="list-style-type: none"> Scored by IELTS. Test Centers provide scores to test takers
Scoring	<ul style="list-style-type: none"> Overall score ranges from 0 to 6, with .1 level increments, as well as individual section scores, based on standardized rubric Scored linguistic sub-skill sections give a more detailed picture of skill level 	<ul style="list-style-type: none"> Overall score ranges from 1 to 9, as well as individual section scores, based on standardized rubric
Scheduling	<ul style="list-style-type: none"> On-demand scheduling within three days of contacting a Certified iTEP Test Center 	<ul style="list-style-type: none"> Approximately 48 fixed test dates per year. Test must be scheduled at least two weeks in advance
Results Delivery Time	<ul style="list-style-type: none"> Results returned in 24 hours 	<ul style="list-style-type: none"> Results usually returned 13 days after test
Additional iTEP Benefits	<ul style="list-style-type: none"> iTEP partners can get immediate online access to all test results, as well as access to the submitted writing and speaking portions iTEP available in customized and modularized versions iTEP partners can utilize their premises to become iTEP test centers and administer the exam on-site 	

Score Equivalency



iTEP Academic Score Equivalencies

iTEP	CEFR	TOEFL® IBT	IELTS	PTE General	PTE Academic
6	C2			Level 5	85-90
5.5-5.9	C1	115-120	8-9	Level 4	81-84
5.0-5.4		110-114			76-80
4.5-4.9	B2	99-109	7.5	Level 3	68-75
4.0-4.4		87-98	7		59-67
3.5-3.9	B1	57-86	5.5-6.5	Level 2	43-58
3.0-3.4	A2	44-56	5	Level 1	36-42
2.5-2.9		32-43	4.5		30-35
2.0-2.4	A1	26-31	4		26-29
1.5-1.9		21-25	3		22-25
1.0-1.4		14-20	2		18-21
0.5-0.9		7-13	1		14-17
0.0-0.4		0-6	0		10-13

3

Opportunities after iTEP



iTEP-US Projects

Cal Poly Pomona (CPP)

3+1(+1) Project – head to
the United States in your
senior year of university!
And maybe even stay for
your masters degree!



J-1 Opportunities

Take part in cultural and
educational exchange
opportunities in the
United States!

- Accepted by more than 700 academic institutions across North America.
- Companies like Honda, IBM, McDonald's, and Royal Caribbean use iTEP tests.
- iTEP products are also being used on a national scale by various governments (ex: Saudi Arabia and Colombia)

iTEP Partners

Opportunities brought by iTEP and Partners

Post Secondary Education



The State University of
New York



Business and Industry



Government



A large blue wavy graphic on the left side of the slide, with a thin black line curving through it.

iTEP Academic

1. Students – Universities, internships, exchange programs, jobs
2. Academic enterprise



iTEP Certificate Tests

1. Provide proof of your English proficiency
2. Professors and teachers – vice-professor to professor
3. Job acceptances and promotions

iTEP Aviation



Aviation Industry

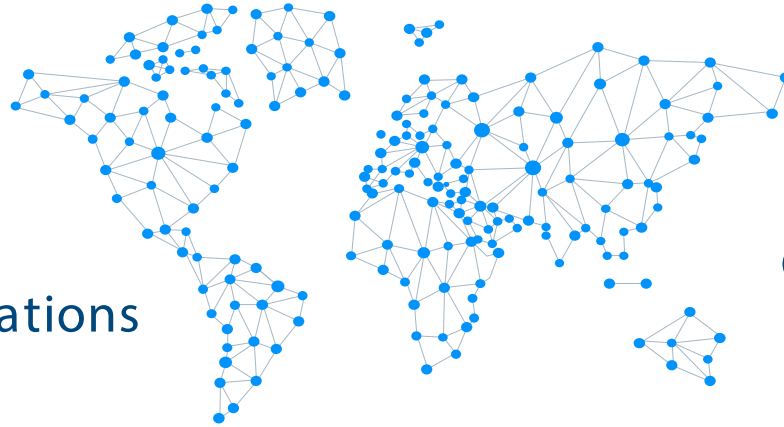


Airport



Airport Assistance

iTEP Business

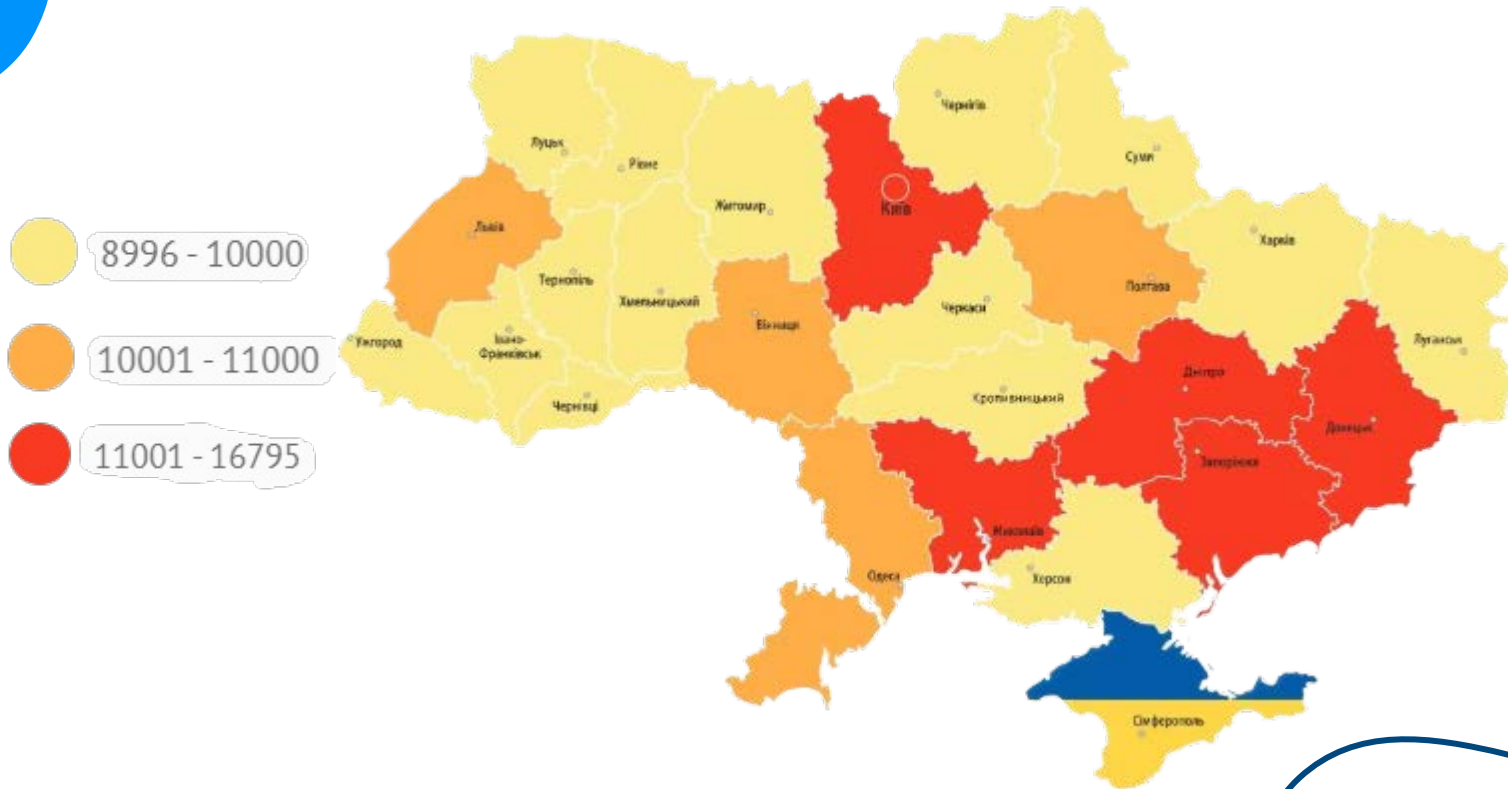


International corporations

Government jobs

International marketing

Average Salary in Ukraine (HRV)



International Average Salary

Academic	\$53,635 to \$98,080
Aviation	\$48,429 to \$191,158
Business	\$85,660 to \$134,290
Government	\$60,340 to \$90,960

<https://academicpositions.com/career-advice/professor-salaries-from-around-the-world>
<http://www.worldsalaries.org/airlinepilot.shtml>
<https://www.internationalrelations.edu.org/international-business-salary/>
<https://work.chron.com/average-salary-government-employees-7863.html>

iTEP Prep Classes

A

Get to know and understand the iTEP test

B

Improve your English proficiency level

C

Get accepted into a US university, get the job you need, and get that promotion you want!

Reward-Benefits Program

We've brought iTEP to Ukrainian students and employees because we want to provide more opportunities. We also want to provide benefits for more people who help promote iTEP for us -- extension study scholarship.

CREDITS: This presentation template was created by **Slidesgo**, including icons by **Flaticon**, infographics & images by **Freepik** and illustrations by **Stories**

Register for the iTEP test!

W a y s of registration

1. Online @TNU website
<http://www.tnu.edu.ua/node/912>
2. By email – itep@risenicec.org
Subject: iTEP Test
Content: Full Name/Passport

Test location

TNU Computer lab (4th floor)

Registration Deadline

November 30, 2020

To register, please provide:

1. **Students:** Passport, Student ID, phone #, and email
2. **Professors:** Passport, Department information, phone #, and email.



Thank you!



Do you have any questions?

Contact us!

Cellphone #: 0982622559 (Elena)

Email: info@risenicec.org
elenazheng@risenicec.org